



Beaufort County Public Works *Stormwater Infrastructure* Project Summary

Project Summary: John Fripp Circle Outfall

Activity: Routine/Preventive Maintenance

Narrative Description of Project:

Project improved 802 L.F. of drainage system. Cleaned out 802 L.F. of outfall ditch.

Completion: Jan-13

2013-585 / John Fripp Circle Outfall	Labor Hours	Labor Cost	Equipment Cost	Material Cost	Contractor Cost	Indirect Labor	Total Cost
AUDIT / Audit Project	0.5	\$10.45	\$0.00	\$0.00	\$0.00	\$6.62	\$17.06
HAUL / Hauling	18.5	\$404.23	\$197.95	\$116.16	\$0.00	\$266.77	\$985.11
ODCO / Outfall ditch - cleaned out	40.0	\$841.10	\$193.00	\$57.73	\$0.00	\$301.20	\$1,393.03
ONJV / Onsite Job Visit	3.0	\$93.66	\$12.06	\$17.52	\$0.00	\$73.41	\$196.65
2013-585 / John Fripp Circle Outfall Sub Total	62.0	\$1,349.43	\$403.01	\$191.41	\$0.00	\$648.00	\$2,591.84
Grand Total	62.0	\$1,349.43	\$403.01	\$191.41	\$0.00	\$648.00	\$2,591.84

Before



During



After



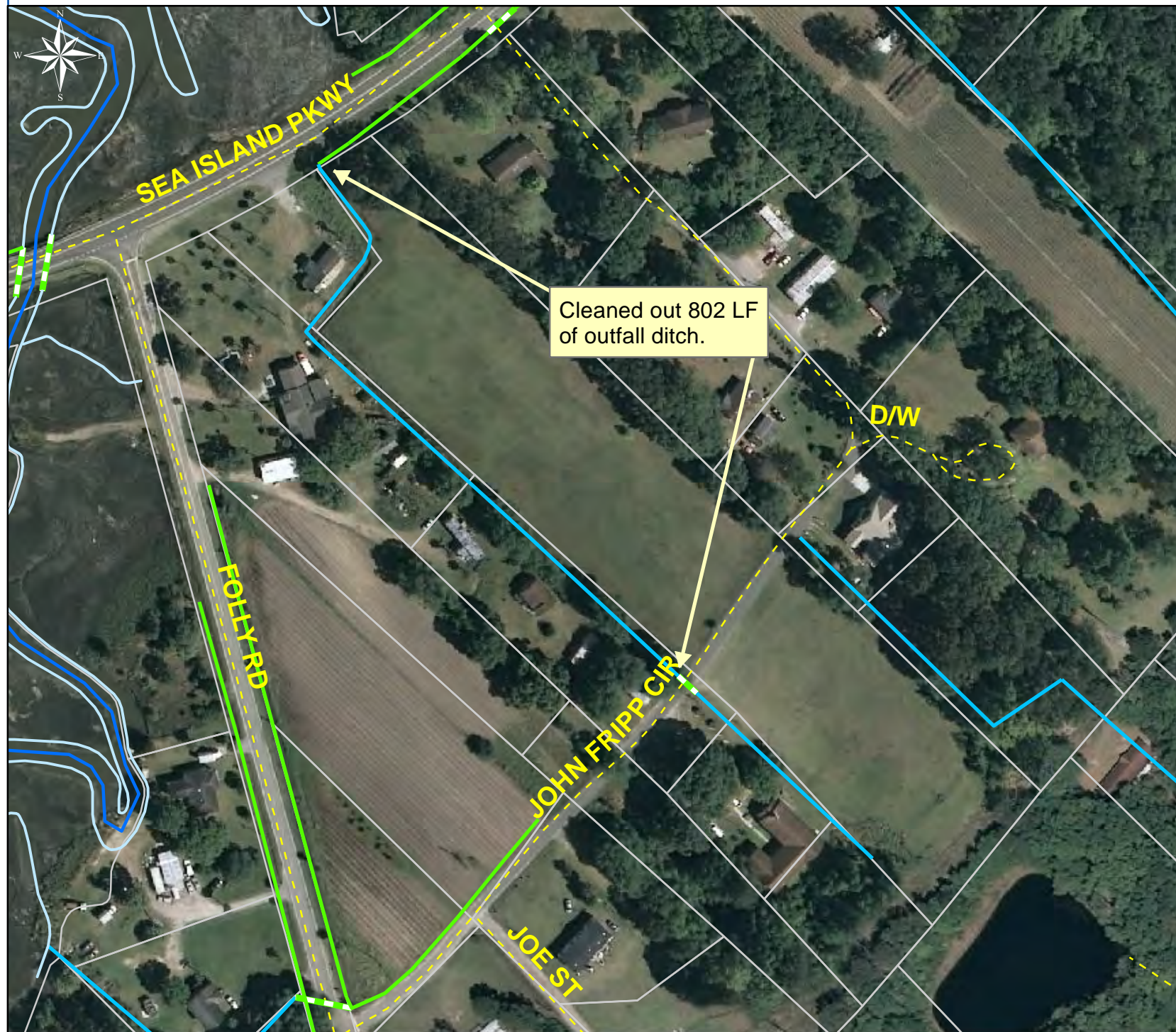
Project: John Fripp
Circle Outfall

Activity: Routine/
Preventive
Maintenance

Project #:
2013-585

Township: St.
Helena Island

Completed:
January 2013



Legend

TYPE

- River
- Creek/Stream
- River/Creek/Marsh BANK
- Channel (fka Outfall)
- Channel Pipe
- Lateral
- Lateral Pipe
- Roadside
- Roadside Pipe
- Road Pipe
- Crossline Pipe
- Driveway Pipe
- Access Pipe
- Bleeder Pipe
- Parcels

0 40 80 160 240 320
Feet

1 inch = 161 feet

Prepared By: BC Stormwater Management Utility

Date Print: 2/5/13

File: C:/sethdata/projects/projectmaps/John Fripp Cir OF 2013-585